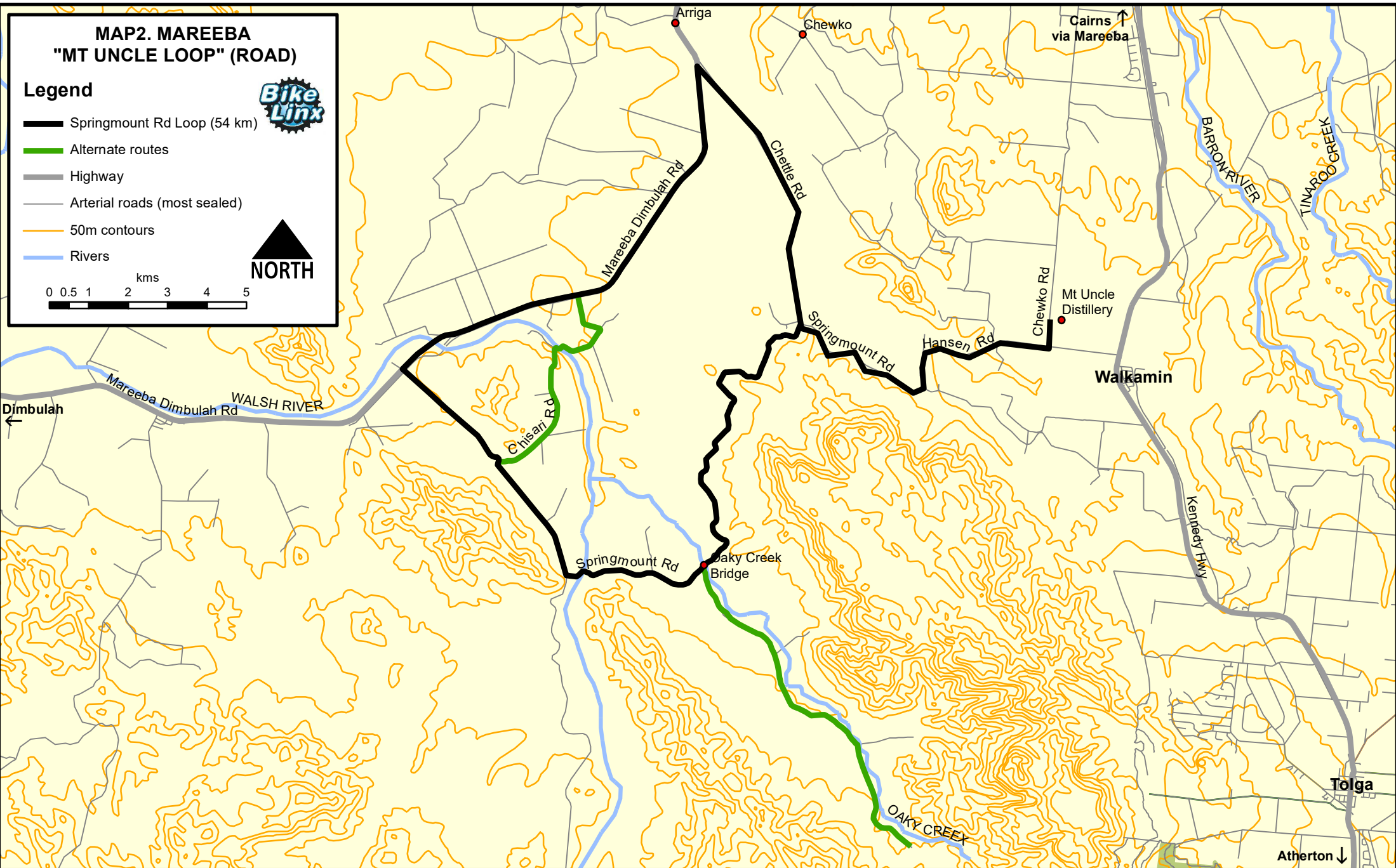
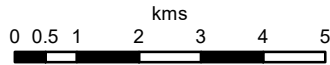


MAP2. MAREEBA "MT UNCLE LOOP" (ROAD)

Legend



- Springmount Rd Loop (54 km)
- Alternate routes
- Highway
- Arterial roads (most sealed)
- 50m contours
- Rivers



Park at Mount Uncle Distillery and ride to the end of Springmount Rd and back.
Suggested stops: Bridges café (Mt Uncle) at the completion of the ride
Side trips: At the Oaky Creek Bridge, turn into the Oaky Creek Estate to extend the riding distance by going out to the end of the valley and back. This is a very quiet sealed road through a rural landscape.
Hot tip: There are no refreshment stops enroute – only at the ride start and finish at Mt Uncle. The outward journey descends slightly and there is usually a tailwind. That means the return journey ascends into a headwind! The route passes the Arriga sugar mill; be wary of cane trucks between June and December. Otherwise, a great road surface and excellent riding terrain.