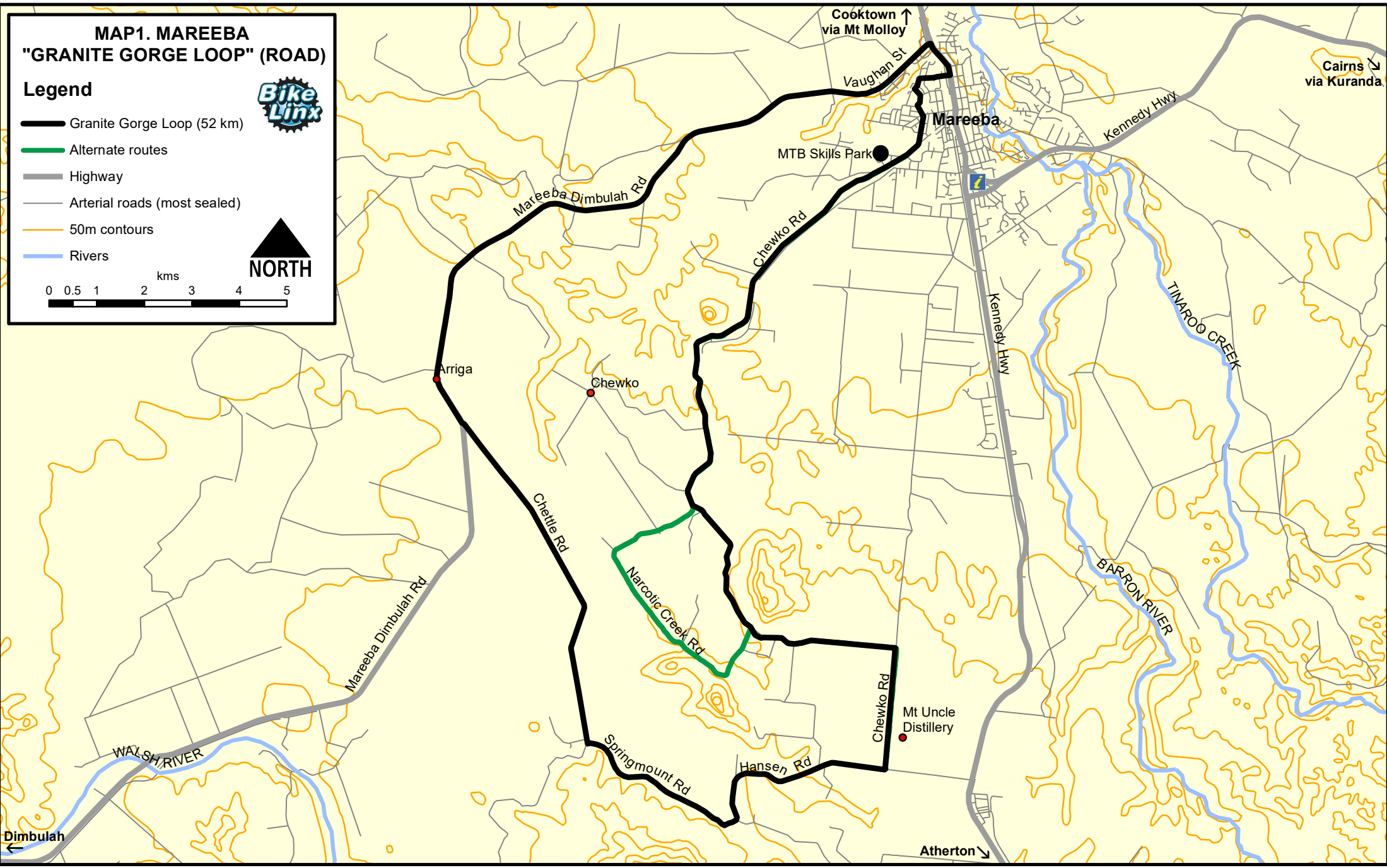
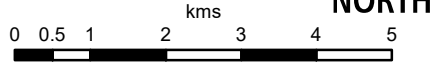


MAP1. MAREEBA "GRANITE GORGE LOOP" (ROAD)

Legend



- Granite Gorge Loop (52 km)
- Alternate routes
- Highway
- Arterial roads (most sealed)
- 50m contours
- Rivers



Gentle to rolling hills through farmland. Slightly busier town roads near Mareeba are unavoidable; traffic is generally low for most of the route.

Suggested stops: Bridges café (Mt Uncle), Granite Gorge, Mareeba Coffee Works, Skybury coffee

Side trips: The road network shown can be combined in different ways to extend, contract the riding experience .

Hot tip: Chewko Rd is windy and narrow, with a poor road surface in places; be careful of on-coming traffic. Be wary of cane trucks between June and December.