




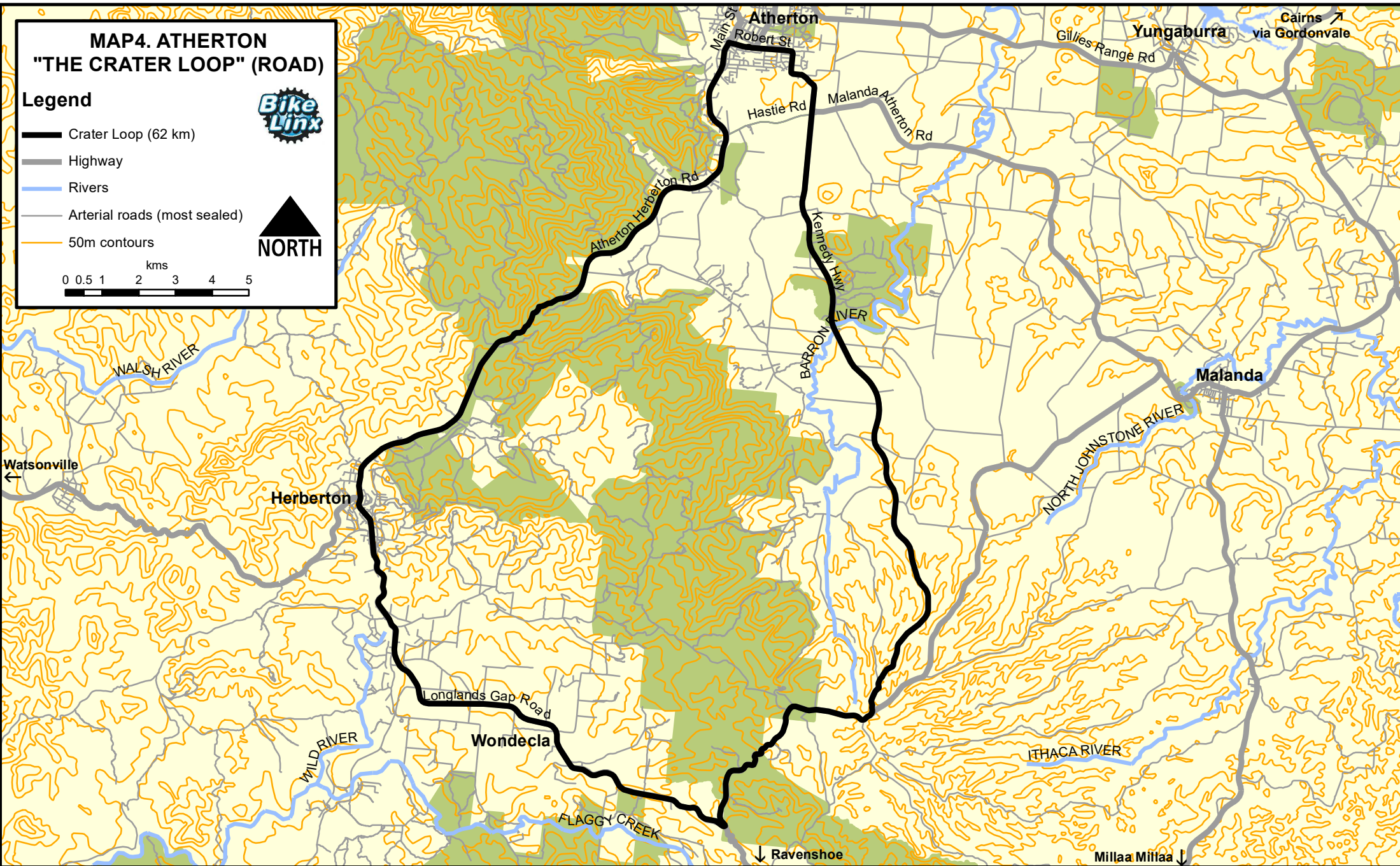
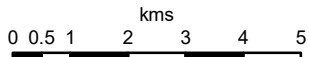


MAP4. ATHERTON "THE CRATER LOOP" (ROAD)

Legend



-  Crater Loop (62 km)
-  Highway
-  Rivers
-  Arterial roads (most sealed)
-  50m contours



The ride climbs from farmlands in the lower country, to upland rainforest. The area around Herberton showcases the area's rich mining heritage.

Suggested stops: Museums and displays in the historic town of Herberton

Side trips: From Herberton, head west towards Irvinebank and ride the rolling hills to Watsonville. This out and back extension brings the ride to ~100km. Alternatively, at Longland's Gap, continue on to Ravenshoe to make it a 100km 'figure 8 ride'.

Hot tip: There is limited mobile phone coverage on this ride and few refreshment stops (Herberton, Wondycla, and Ravenshoe)